

Creative Learning



April – September 2013

Informal courses and workshops
in the creative arts for everyone

**Daytime and
evenings**

**Weekdays and
weekends**

**One day to 12
weeks**

**No
qualifications
necessary**

From under £20



Visual art Music Jewellery making Words Sculpture Crafts
Art and music history Dance Pottery Photography Family

t: 0116 252 2455 **www.**embracearts.co.uk

Embrace Arts
Lancaster Road
Leicester LE1 7HA

The University of Leicester's arts centre – open to all
Patron: The Rt Hon Lord Attenborough Kt CBE

Welcome to creative learning at Embrace Arts

This guide details the 43 courses and 37 workshops we are running between April and September 2013.



We offer high-quality, friendly learning in a wide range of subjects, suitable for both established creatives looking to develop their talents and those wanting to learn new skills in an enjoyable way but without too much commitment. Disabled adults are particularly welcome and no formal qualifications are required.

Our programme is designed to fit with your life. The courses and workshops vary in length from one day to 12 weeks, and take place at different times of the day and in the evening, during the week and at weekends. Prices start from under £20.

Embrace Arts has been helping people to develop their creative talents for more than 15 years, providing high-quality teaching in a friendly, supportive atmosphere. Many of our experienced and enthusiastic tutors are practising artists themselves.

Whether it's developing your painting skills, learning a new craft, making your own jewellery, becoming a better guitar player, enhancing your appreciation of art, singing for fun in a group, having a go at salsa or belly dancing, or joining in a discussion about some great books – we're sure to have a course or workshop to suit you.

This guide gives just a taster of what is on offer. We would be pleased to advise on which courses and workshops would be best for you – and we'd also love to tell you about our special offers exclusive to Embrace Arts learners on our great programme of shows, concerts, exhibitions and family events throughout the year.

You can book for any of these courses and workshops from **10am on Monday 18 February 2013** onwards. Full details on page 31.

NEW Storytelling, early years sculpture, crafts, dancing for tots – Don't miss our new courses and workshops for all the family – see pages 15 – 16.

Richard Attenborough centre
Lancaster Road
Leicester LE1 7HA

t: 0116 252 2455

e: arts-centre@le.ac.uk

www.embracearts.co.uk

RNID Typetalk service: 18001 0116 252 2455

Course information

The cost of basic materials is included in the price, unless otherwise stated.

Contents

	Courses	Workshops
Visual art	4	17, 18
Explore, create, connect	7	-
Sculpture and pottery	8	-
Art history	9	-
Dance	10	17
Music and music history	12	-
Photography	13	18, 20
Words	14	-
Jewellery making and crafts	14	19
Family	15	-
Meet our tutors	21	
Course planner	26	
Workshop diary	28	
Booking form	29	
How to book	31	
How to find us	32	

Image: Andrew Wynne

Our thanks to all the learners, tutors and artists who kindly gave us permission to use images of their work and quote their comments.

Every effort has been made to ensure all information is correct at the time of printing. However, we reserve the right to make amendments as necessary.

Courses

Visual art

Abstract watercolour

Tuesdays, 1.30pm – 4pm

30 April – 4 June

Tutor: Lois Gardner Sabet

£70 / £40 for 6 sessions

Work with the basics of colour theory, using watercolours to develop your own catalogue of expressive brush strokes and compositions leading to completed paintings.

Z734

The abstract garden

Tuesdays, 1.30pm – 4.30pm

11 June – 9 July

Tutor: Peter Clayton

£55 / £30 for 5 sessions

Learn to make abstract pictures in a variety of media based on ideas inspired by the combination of order and chance that is a garden. The first session takes place at the University of Leicester's Botanic Garden in Oadby.

Z735



Kate Moore



Ruth Cockayne

Painting problems: The art of the landscape sketchbook

Wednesdays, 10am – 3pm

29 May – 3 July

Tutor: Jenny Wright

£120 / £60 for 6 sessions

Produce sketchbooks and journals based on landscape as works of art in their own right, doing some of your studies in nearby Victoria Park. For more experienced artists and beginners wishing to develop their skills and take risks.

RZ729

For a full description and further information:

www.embracearts.co.uk

t: (0116) 252 2455

e: arts-centre@le.ac.uk



Peter Clayton

A sense of place: Woodland

Wednesdays, 1.30pm – 4.30pm

24 April – 22 May

Tutor: Peter Clayton

£55 / £30 for 5 sessions

Create descriptive and imaginative responses to the subject of woodland, exploring themes of realism, abstraction and narrative. For anyone wishing to learn new or expand their existing skills in a range of media and styles.

RZ694

Life drawing: Finding a focus

Wednesdays, 6.30pm – 8.30pm

15 May – 12 June

Tutor: Diane E Hall

£60 / £35 for 5 sessions

Concentrate on drawing parts of the body and exploring in detail the shapes created in different stances. Using a variety of approaches and media suggested by the tutor, this course is suitable for artists with considerable experience, as well as newcomers to this area of art. Please note, this life drawing course features an unclothed model and is therefore only open to those aged 16+.

RZ695

Problem and criticism

Thursdays, 11am – 12.30pm

(fortnightly)

25 April; 9 and 23 May; 6 and 20

June; 4 July

Tutor: Diane E Hall

£50 / £25 for 6 sessions

Join with other artists to develop your critical skills and become more confident in your ability to develop your own style. These friendly, supportive classes are devoted entirely to discussion and criticism of work done at home. The six sessions are based around a focus and specific creative problems set by the tutor. Learners will be required to work outside of the class using their own materials, resulting in a number of pieces using a variety of materials and approaches.

RZ696 Fully booked: Waiting list only

NEW

Pen and ink drawing

Thursdays, 11am – 1pm

9 May – 11 July

Tutor: Stephen Coley

£100 / £50 for 10 sessions

Learn how to draw with confidence by exploring the art and techniques of the ink pen. Topics include ways of seeing in observational drawing, and how best to capture movement, light and shade.

Z736

“a tremendously
creative place”

Painting and drawing themes: Landscape and composition

Thursdays, 2pm – 4.30pm
25 April – 27 June

Tutor: Anna Revill

£100 / £50 for 10 sessions

Using the theme of landscape and composition, expand your experience of painting and drawing and explore a variety of approaches, such as working with nearby subjects, distant views and angle of view, sometimes exploring several possibilities in a group of related images. Suitable for beginners and the more experienced.

RZ697



Botanical drawing and painting

Fridays, 10am – 1pm
10 May – 12 July

Tutor: Georgia Danvers

£100 / £50 for 10 sessions

Build your understanding of how to draw and paint plant specimens as you learn and develop your skills in watercolour techniques and colour theory. One of the sessions will be at the University of Leicester's Botanic Garden in Oadby.

Z737

NEW

How to exhibit

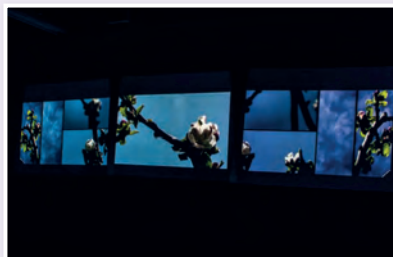
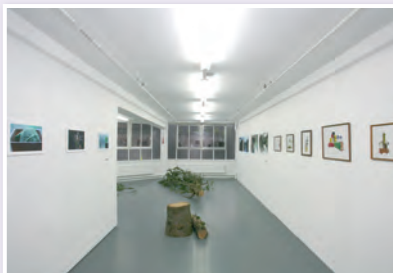
Fridays, 10am – 1pm
17 May – 12 July

Tutor: Leila Houston

£100 / £50 for 9 sessions

Ever wondered how an exhibition is put together? Gain an insight by visiting local art galleries, meeting professional curators and artists, and classroom-based work. Learn about various aspects such as advertising techniques, display and presentation, writing an artist's statement, and planning a show. A great opportunity for practising artists to gain confidence in making connections and discussing professional practice.

Z738



Leila Houston



Scott Bridgwood

Aspects of life drawing

Fridays, 2pm – 4.30pm

Tutor: Scott Bridgwood

£128 / £65 for 10 sessions

Please note, these life drawing courses feature an unclothed model and are therefore only open to those aged 16+.

The painted nude

10 May – 12 July

With the emphasis more on creativity than draughtsmanship and anatomical detail, discover ways to experiment with and express yourself in paint.

RZ698

Life drawing for complete beginners

26 July – 27 September

An opportunity for absolute beginners to life drawing to find out how to render the human figure accurately and confidently. Those who wish to improve their skills are also welcome for this mix of classwork and one-to-one tuition.

RZ727

Explore, create, connect



A more accessible and flexible approach to learning to suit you

- Open to all levels of experience
- Adults with a disability particularly welcome
- Pay as you go or book a number of sessions at once – it's up to you
- Cost per session: £8 (£4 concessions).

Adventures in art

Tuesdays, 10am – 12.30pm

23 April – 25 June

Tutor: Caroline Throp

A broad course based on the theme of natural items, designed for those who wish to find ways into art. Visual images and objects will be provided to inspire a variety of approaches using all sorts of materials.

RZ701



Sculpture and pottery



Austin Orwin

Pottery for all

Mondays, 10am – 12pm

22 April – 8 July

Tutor: Bridget McVey

£100 / £50 for 10 sessions

A relaxed and informal course for all abilities where you can be inspired and supported to be innovative with clay. Learn the basics or extend your knowledge further.

(not 6 or 27 May)

Z739

For a full description and further information:

www.embracearts.co.uk

t: (0116) 252 2455

e: arts-centre@le.ac.uk

Experiments in sculpture

Tutor: Austin Orwin

£100 / £50 for 10 sessions

Develop ideas and experiment with form, initially through drawing and maquette making before scaling up to create a finished sculptural piece. Learn a range of sculptural techniques from initial conception of an idea to the finished sculpture, through an ambitious approach to object making. Suitable for both beginners and those with previous experience looking to develop their practice.

You can choose to do this course on a Monday or Thursday, 6.30pm – 9pm.

15 April – 1 July

(not 6 or 27 May)

RZ699

25 April – 4 July

(not 30 May)

RZ700



Art history



NEW

Ancient wall paintings in context

Tuesdays, 10.30am – 12pm

7 May – 9 July

Tutor: Ulla Rajala

£65 / £35 for 10 sessions

Discover the wall paintings of ancient Mediterranean civilisations, exploring the images and their style and 'visiting' excavations from Egypt to Crete and Italy.

Z740

Exploring art: Artists inspiring artists

Wednesdays, 10.30am – 12pm

24 April – 26 June

Tutors: Miriam Gill and guests

£65 / £35 for 10 sessions

Across the centuries artists have drawn inspiration from others' work. Whether their encounters took place in a workshop or a museum, they were inspired to emulate and surpass what they had seen.

RZ702



Art examined: Schemes and symbols

Wednesdays, 1pm – 3pm

24 April – 22 May

Tutors: Miriam Gill and guests

£40 / £25 for 5 sessions

Many famous decorated interiors combine lavish works of art to create a unique web of meanings and associations. Explore significant schemes and their complex meanings from Westminster Abbey to Versailles.

RZ703

NEW

Eminent Victorians

Thursdays, 1pm – 3pm

6 June – 11 July

Tutor: Conny Bailey

£40 / £25 for 6 sessions

Find out about the rich variation of Victorian art and learn about how even the smallest detail can be infused with meaning by examining the works of six well-known Victorian artists.

Z741

NEW

Art across boundaries

Fridays, 2pm – 4pm

7 June – 12 July

Tutor: Malika Krammer

£40 / £25 for 6 sessions

Investigate historical and contemporary art from different parts of the world and how it is presented in Western museums, exploring the basics of curating exhibitions of global art.

Z742

Dance



Hula hoop dance for beginners

Mondays, 6.30pm – 7.30pm

8 April – 20 May

Tutor: Hannah Myatt

£45 for 6 sessions

Ideal for beginners as this course covers all the basics, including hooping on the waist, before moving on to 'off-body' tricks, hooping on different parts of the body and learning to dance with the hoop. Hula hoops provided.

(not 6 May)

Z743



For a full description and further information:

www.embracearts.co.uk

t: (0116) 252 2455

e: arts-centre@le.ac.uk

Belly dance for beginners

Mondays, 7.30pm – 8.30pm

8 April – 20 May

Tutor: Hannah Myatt

£36 for 6 sessions

Learn the sensual flowing and rhythmic bumping hip motions of Raks Sharki (the proper name for belly dance) and discover how it uses the whole body. Originally practised by women to prepare the body for pregnancy and childbirth, this dance form tones the abdomen and lower back. Designed for complete beginners, this course taught by a professional belly dancer will really enhance your dancing skills.

(not 6 May)

Z744

Open class burlesque

Mondays, 8.30pm – 9.30pm

8 April – 8 July

Tutor: Hannah Myatt

£65 / £35 for 12 sessions

For all abilities, this class is about learning fun routines as a group. Expect chair routines, vintage bumps and grinds, pussycat dolls, cheeky cheesecake routines and more.

(not 6 or 27 May)

Z745

“fantastic atmosphere”



Hannah Myatt

Intermediate hula hoop

Mondays, 6.30pm – 7.30pm

3 June – 8 July

Tutor: Hannah Myatt

£45 for 6 sessions

Move on from the beginner's course to tackle combinations and simple routines to link moves together, making your hooping much smoother and really taking your dancing to the next level. Hula hoops provided.

Z746

Burlesque for beginners

Mondays, 7.30pm – 8.30pm

3 June – 8 July

Tutor: Hannah Myatt

£36 for 6 sessions

Feel like a million dollars as Hannah Myatt's alter ego Doe Demure helps you discover your cheeky, saucy side. Learn about styles of walking, posing, glove removal, stocking removal, the use of props and some fun routines as well. You will need opera gloves and stockings (this will be discussed at the first session) – bring your high heels.

Z747

Latin American dance

Tuesdays, 23 April – 25 June

Tutor: Maggie Munoz

£65 / £35 for 10 sessions

For beginners

6pm – 7.30pm

Get on your feet and have a go at this fun, energetic and exciting dance style. Improve your health, fitness and well-being. For adults interested in learning the basic skills, this informal course led by an experienced dance facilitator requires no specialist clothing or footwear.

RZ708

Intermediate

7.45pm – 9.15pm

Enjoy Latin dance in its many forms and explore some of its more skilled aspects in styles such as salsa, merengue, cha cha cha, cumbia and reggaeton. This course is aimed at those with some experience of Latin American dance.

RZ709



Music



Singing for fun

Mondays, 1.30pm – 3.30pm

15 April – 8 July

Tutor: John Gull

£75 / £38 for 11 sessions

Enjoy being part of a friendly group where the emphasis is on having fun – a healthy tonic for budding vocalists. Ideal for all ages, whether you already love to sing or want to find your voice. Explore a repertoire of songs in a wide variety of styles and traditions, including songs from the musicals, popular classics, folk songs, part songs and comedy items. The singing is mainly in unison, with some simple part-singing, mainly learnt by ear, depending on the ability and number of participants. No musical knowledge necessary.

(not 6 or 27 May)

RZ710

Music history

Listening to jazz

Mondays, 6pm – 7.30pm

2 – 30 September

Tutor: Mark Polishook

£30 / £20 for 5 sessions

Explore styles across the history of jazz to appreciate how practitioners extended, subverted and challenged the classical music tradition.

A600

Jazz performance

Mondays, 7.15pm – 9.15pm

22 April – 8 July

Tutor: Richard Everitt

£70 / £35 for 10 sessions

Gain confidence in your ability to improvise through a better understanding of scales, modes and chords, and develop your performance skills. For anyone with an interest in jazz and reasonable proficiency on a musical instrument. To take full part in all aspects of the course you will need to read music or chord symbols, but those who play by ear are also welcome.

(not 6 or 27 May)

RZ711



NEW

Acoustic guitar for beginners

Wednesdays, 5.30pm – 6.30pm

1 May – 10 July

Tutor: Ketan Patel

£58 for 10 sessions

For newcomers looking to learn the basics of playing the acoustic guitar with an emphasis on sound right-hand and left-hand techniques.

(not 29 May)

Z748

Classical guitar

Wednesdays, 1 May – 10 July

(not 29 May)

Tutor: Ketan Patel

£58 for 10 sessions

We advise you take the beginner or intermediate course for 30 weeks before moving on to the next level.

Beginners

6.30pm – 7.30pm

Learn the basics of classical guitar playing in a friendly group setting with a strong emphasis on ensemble playing. No previous musical knowledge required but you will need to bring your own nylon-strung guitar, footstool and course book – please ask us for details. Suitable for beginners only.

RZ712

Intermediate

7.30pm – 8.30pm

For anyone who wishes to explore a wider range of keys and musical styles and learn new repertoire in a friendly group setting. Suitable for those with approximately 2 years' playing experience who can already read music.

RZ713

Experienced

8.30pm – 9.30pm

For those wanting to extend their repertoire, improve their playing skills and study more challenging ensemble pieces. For those with 5+ years' experience.

RZ714



Ketan Patel

Photography



NEW

Ways of looking

Wednesdays, 1pm – 4pm

8 May – 26 June

Tutor: Leila Houston

£80 / £40 for 7 sessions

Explore the rural and urban outdoors and be inspired by what you see and photograph to create contemporary art from your images, both individually and as a group. A digital camera is ideal or one on a phone at 6 – 8 megapixels.

(not 29 May)

Z749



Leila Houston

For a full description and further information:

www.embracearts.co.uk

t: (0116) 252 2455

e: arts-centre@le.ac.uk

Words



Reading and thinking: Shakespeare's contemporaries

Tuesdays, 7pm – 9pm

23 April – 2 July

Tutor: Richard Gill

£65 / £35 for 10 sessions

The work of Marlowe, Johnson, Middleton, Webster and Ford is exciting, inventive and sometimes shocking. Discover how their plays still live on the page and stage.

(not 28 May)

RZ715



For a full description and further information:

www.embracearts.co.uk

t: (0116) 252 2455

e: arts-centre@le.ac.uk



Kate Bajic

Jewellery making



Silver jewellery for improvers

Mondays, 2pm – 4.30pm

15 April – 17 June

Tutor: Kate Bajic

£100 / £75 for 8 sessions

An opportunity to learn from a professional jeweller and develop a wide range of techniques for working in silver.

(not 6 or 27 May)

RZ704

Create your own jewellery

Tuesdays, 6.30pm – 9pm

7 May – 9 July

Tutor: Alex Williamson

£120 / £60 for 10 sessions

Learn how to design and make your own pieces of unique jewellery through a variety of techniques, including soldering, fusing, riveting, texturing, doming and the colouring of metal.

RZ705

Family



Lindsey Warnes Carroll

Workshop for 3 – 6 years

Family fun with stories

Saturdays, 2pm – 3.30pm

Led by Lindsey Warnes Carroll
£7 per child (accompanying adult free)

Sessions for all the family to enjoy together. Listen to some wonderful stories and join in the fun, creating the crafts, movement and songs they inspire. Wear some comfortable clothes that you don't mind getting messy. All materials provided.

6 April

Z750

25 May

Z751

13 July

Z752



Workshop and course for 8 – 15 years

Family sculpture

Wednesdays, 6pm – 8.30pm

Tutor: Penny Davis

Taster workshop: 29 May, £8

Course: 19 June – 10 July,

£32 for 4 sessions.

An exciting way for children and their adults to discover sculpture together, using lots of different materials to try out carving, modelling and construction techniques under the guidance of an experienced sculptor.

Workshop: Z766

Course: Z753



Workshop for 5 – 12 years

Adventures in Burgertown

Saturday 1 June, 10am – 1pm

Led by Lisa Pidgeon and

Lindsey Warnes Carroll

£10 per child (accompanying adult free)

Be inspired by the work of cartoonist Jon Burgerman ('Pens Are My Friends') to make a three-dimensional character from recycled textiles, and then use it to create your own stories. Please note children under 8 years must be accompanied by an adult.

Z754



Course for under 4 years

Tiny dancer

Tuesdays, 1pm – 2pm

4 June – 9 July

Tutor: Alison Bacon

£20 for 6 sessions

A fun and friendly dance class specially designed for children under 4 years and their parents / carers. Dance, move, sing and play together, using all kinds of music and props, including the popular 'stretchy band' (provided). No special equipment or clothing necessary.

Z755

Courses for 0 – 7 years

Early years sculpture

Saturdays

10am – 12pm: 0 – 2 years

1pm – 3pm: 3 – 7 years

Tutor: Penny Davis

£16 per child for each pair of sessions (accompanying adult free)

A great way for children and their adults to explore sculpture through messy play over two sessions. Try different materials and techniques, collecting your discoveries in your own photo scrapbook.

15 and 22 June

Z756 Z767

20 and 27 July

Z757 Z768

24 and 31 August

A601 A610

21 and 28 September

A602 A611



**Discover more
at Embrace Arts**

Take part in our exciting cultural learning programme for children and young people, including:

- School and community group performances and workshops
- Youth Arts Award with discounted tickets
- Continuing professional development for teachers
- Meet the Artist residency programme
- Young People's Advisory Board – help shape what goes on at Embrace Arts. Open to young people aged 14 – 19 years and young disabled people
- Short Arts Breaks – these fun days, held in the school holidays, are specifically designed for children with profound and complex disabilities and led by arts companies such as Bamboozle Theatre.

For details on all these and more, contact arts-education@le.ac.uk or visit www.embracearts.co.uk.



Workshops



Visual art

Life drawing on Saturdays

All 10am – 3.30pm, £40 / £22

Our life drawing courses are only open to those aged 16+ years as they feature an unclothed model.

Masterclass

20 April

Tutor: Scott Bridgwood

Push the boundaries of life drawing to produce expressive works of art. For those who wish to take their skills on to the next level.

RZ717

Tone and form

18 May

Tutor: Diane E Hall

Learn to observe carefully and appreciate proportion, tone and form. Beginners and experienced artists are welcome as individual interpretation is encouraged.

Z758

For absolute beginners

7 September

Tutor: Scott Bridgwood

For newcomers wishing to create a convincing life drawing. Designed to give participants the know-how and confidence to render the human form using a variety of media and one-to-one teaching.

A603

Portraiture

Saturday 6 July, 10am – 3.30pm

Tutor: Scott Bridgwood, £40 / £22

Gain a better insight into the making of a portrait, studying and drawing from a live model in innovative ways. Use tried and tested methods to learn how to look at and depict the portrait step by step. Suitable for all levels of ability.

RZ718

Dance

Cheerleading

**Saturday 11 May,
10am – 12pm**

Tutor: Hannah
Myatt, £15 / £10



Shake your pompoms (provided)! With plenty of dance-style cheer moves and combinations, this light-hearted workshop is fun for everyone.

Z759

For a full description and further information:

www.embracearts.co.uk

t: (0116) 252 2455

e: arts-centre@le.ac.uk

Workshops at the Botanic Garden

Held to coincide with the University of Leicester's Sculpture in the Garden 2013 exhibition, these workshops are inspired by the beautiful surroundings of the Harold Martin Botanic Garden in Oadby. They take place in the on-site studio there, unless otherwise indicated:

Photography

Practical landscapes

Tuesday 16 and Wednesday 17 July, 10am – 3.30pm daily

Tutor: Robert Hall
£60 / £30

Ideal for anyone who enjoys landscape photography but is often disappointed with the results. The two days combine practical sessions at the Botanic Garden and at Watermead Country Park, with evaluation back in the studio of the images taken.

RZ726

Capturing light

Saturday 17 August, 9am – 5pm

Tutor: Linda Young, £40 / £22

Discover how to make images using photographic paper and chemicals without the need for a darkroom. Through this exciting process, experiment with simple objects to produce striking images.

A604



Visual art

Botanical art and William Morris

Saturday 3 August, 10am – 4pm

Tutor: Georgia Danvers, £40 / £22

Learn about the origins of botanical art and how it still fits into today's world by examining work by past and present artists, in particular William Morris. Discover how he used nature to produce some of his famous designs and then create your own in his style, through drawing, tracing and other techniques with watercolour paints or pencils.

A605

Drawing and painting in the Botanic Garden

Monday 19 – Wednesday 21 August, 10am – 3.30pm daily

Tutor: Diane E Hall, £95 / £50

Experiment over three days with different approaches and materials to develop initial ideas and exploratory drawings, inspired by the Botanic Garden, into a final painting or mixed media work.

RZ719

Jewellery making and crafts

Working in silver

Saturdays, 10am – 3.30pm

Tutor: Kate Bajic, £60 / £40

An opportunity to make your own pieces and learn techniques including soldering, forming, sawing, hammering, drilling, doming and filing. Suitable for both beginners and improvers.

Bangles and bracelets

11 May

RZ722

Earrings and cufflinks

1 June

RZ721

Rings

14 September

A606

The art of origami

Saturdays, 10am – 4pm

Tutor: Phiona Richards, £40 / £22

Experience the delights of the gentle art of origami, producing useful and interesting items from folding both decorative and reclaimed paper.

Books

18 May

Z760

Jewellery

27 July

Z761

Decorative paper making

Saturday 15 June, 10am – 4pm

Tutor: Joy Norman, £40 / £22

Learn how to create your own unique textured and patterned paper samples, using impressions, inlays of flowers and plants, and a host of other embellishments.

Z762



Joy Norman

Creative felt making

Saturday 22 June, 10am – 3pm

Tutor: Caroline Kisby, £40 / £22

With just soap, water and a bit elbow grease, transform colourful merino wool into your own lovely handmade felt items.

Z763

Fun with block printing

Saturday 13 July, 10am – 1pm

Tutor: Linda Harding, £20 / £12

Use traditional hand-carved wooden blocks from India to print onto papers and fabrics to create your own unique works of art.

Z764

Batik – but not as we know it

Saturday 10 August, 10am – 3.30pm

Tutor: Andrew Wynne, £40 / £20

Explore innovative approaches to this traditional textile craft, using wax resists, dyes, collage and discharge techniques on fabric and paper.

A607

Creative jewellery weekend

**Saturday 31
August and
Sunday
1 September,
10am – 5pm**

Tutor: Betty
Ching, £120 / £60



Betty Ching

Immerse yourself in two days of designing and making your own creative jewellery projects. A variety of techniques will be demonstrated for you then to try out yourself, including wire wrapping and using metal components and tools.

RZ728

Knitting from scratch

Saturday 7 September, 10am – 3pm

Tutor: Julie Beardwell, £40 / £22

Knit, purl, cast off, row, right side, wrong side: discover the meaning of all these terms and more as you learn the basics of how to knit in this one-day workshop for complete beginners.

A608

Embroidered felt ball jewellery

**Saturdays 21 and 28 September,
10am – 12.30pm**

Tutor: Jo Leatherland, £40 / £22

Learn how to make felt balls and embellish them with hand embroidery and beads to create your own unique jewellery pieces.

A609

Photography

Exploring photography

Saturdays, 10am – 1pm

Tutor: Robert Hall, £40 / £22
or £35 / £18 for all three

For creative photographers who want to investigate new avenues and ways of looking. In the two sessions for each topic, you will examine the images of established photographers, do individual projects and discuss each other's work as a group.

Line, shape and repetition

13 and 27 April

RZ723

Hue and colour saturation

4 and 18 May

RZ724

Street photography

8 and 22 June

RZ725

Pinhole photography

Saturday 20 July, 10am – 4pm

Tutor: Jon Legge, £40 / £22

Build your own camera from an empty (clean) beer can, and then use it to produce a series of amazing black and white images.

Z765



Jo Leatherland



Meet our tutors

Thank you to all those tutors who provided biographical details to help people select their courses and workshops.

Alison Bacon trained to teach dance with the International Dance Teachers Association and currently runs sessions for children and adults across the city. She describes dance as a great form of exercise which also has a wonderful social element.

Kate Bajic is a professional jeweller who exhibits her work in galleries and exhibitions nationwide. She also teaches across the East Midlands, giving beginners and improvers the opportunity to create beautiful silver jewellery.

www.katebajic.co.uk



Julie Beardwell has been knitting since she was six years old. She is co-owner of Knit 'n' Caboodle, an online wool shop based in Leicestershire. Julie also designs patterns and knitting kits and runs knitting workshops across Leicestershire and Rutland www.knitncaboodle.co.uk



Scott Bridgwood is a figurative artist who graduated from Chelsea College of Art & Design in 1991. He has exhibited in London and Rome where he also taught at the British Cultural Institute. He has sold widely and won various prestigious awards. A former chair of Leicester Society of Artists, he teaches at various venues across Leicestershire.

www.scottbridgwood.daportfolio.com



Betty Ching makes creative fashion jewellery influenced by her background in textile design and her fascination for body movement. Her interest in passing on her skills through jewellery workshops has also led her to develop a range of jewellery-making kits.

www.bettyching.co.uk



Peter Clayton graduated in fine art in 1981. He has shown in some 150 solo and group exhibitions around the UK, and his work is in private and public collections worldwide. Commissions and residences include P&O Cruises, Faber & Faber, Grizedale Forest in Cumbria, and Buckinghamshire Museum and Art Gallery. He has taught at Embrace Arts since 1998.

www.peterclayton.org



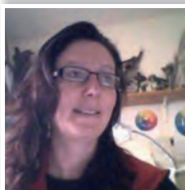
Stephen Coley is a fine art graduate and co-founder and active member of the visual arts organisation Artblock. A practising artist, he has exhibited throughout the UK. His main areas of work revolve around organic sculptures, using metals or plastics, and mixed media collages incorporating drawing, painting, tissue and photography. www.stephen-coley.com



Georgia Danvers is a trained botanical artist who has exhibited throughout the UK, including three prestigious exhibitions held

by the Society of Botanical Artists in London. She is also a published artist and currently teaches courses through to diploma level.

www.spirotanical-art.com



Penny Davis is a professional artist whose work has been exhibited and is held in collections both nationally and internationally, including Italy and the USA. She is currently completing a practice-based PhD in sculpture at the University of Gloucestershire. Holder of a PGCE in further education, she has taught all ages in a variety of contexts, including at the former City Gallery and for the Mighty Creatives in Leicester. www.pennydavis.com

Lois Gardner Sabet is a fine art graduate who has been working for many years as an abstract painter using pattern, colour and rhythm in her large watercolours. She has exhibited and sold works internationally and taught in residential courses in the UK and France. She is dedicated to helping people find their own form of expression with paint and gain complete confidence in using colour. www.lois-gardner-sabet.co.uk



Miriam Gill has a lifelong fascination with visual art. Her studies at Oxford and The Courtauld Institute of Art focused on the Middle Ages, but she has a wide-ranging interest in different periods and artists and the connections between them.

Richard Gill has taught at Embrace Arts for many years. He has written books on Marlowe, Shakespeare, Donne, Jane Austen, Tennyson and Yeats, and



has taught for over 30 years at Wyggeston and Queen Elizabeth I College, as well as at Vaughan College and the Workers' Educational Association. He has also worked in radio and television.

John Gull is a professional vocal coach with 20 years' experience and a diverse background in choral music, from cathedral choirs to barbershop choruses. He aims to enthuse learners to enjoy singing with others in a friendly and relaxed atmosphere. www.johngull.co.uk



Diane E Hall is a practising artist who worked in disability education for 25 years before becoming a tutor at Embrace Arts in 2000. Her courses are stimulating and inspired by creative ideas and knowledge of art history and current practice. She uses a variety of approaches to learning, interpretation and engagement with art, and aims to encourage creative experience and provide an opportunity for learners to develop new skills and to evaluate and assess their own work. www.g8artists.co.uk

Robert Hall is a practising art photographer with a degree in visual communications. He has exhibited his images around the country, gaining several prizes. He has run courses on digital photography and image manipulation for the last ten years and is a founder member of Photoimage21 and co-ordinator of the digital imaging group in Leicester U3A. www.photographics2000.co.uk



Linda Harding is an artist who works mainly in textiles, selling to commission, through local galleries and online. She has 12 years' teaching experience with both children and adults in schools and museums,

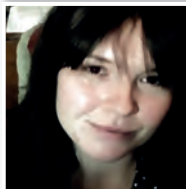
and for community arts programmes such as Spark Children's Arts Festival and Leicester Mela, and loves to awaken the creative spark in others.

www.inspiring-art.co.uk

Leila Houston uses

photography, installation, film and sound as contemporary art forms. After graduating from Nottingham Trent

University in 2003, she spent five years with Digswell Arts Trust. She now exhibits, curates shows and sells work countrywide, as well as running art classes in galleries, universities and schools. She recently attained an MA with distinction from De Montfort University.



Malika Kraamer is

passionate in her current work as curator of world cultures at New Walk Museum and as an independent curator, researcher and tutor. A specialist in contemporary global arts, she studied at different European universities and did her doctoral studies in African art at the School of Oriental and African Studies, University of London.

Caroline Kisby is an

established freelance artist and a qualified arts and crafts tutor. She also curates exhibitions and develops projects for Cambridgeshire-based charity Arts and Minds. She regularly exhibits her work and is a member of Rutland and Stamford Embroiderers' Guild and AccessArt, Cambridge.

www.pinkhousearts.co.uk



Jo Leatherland is a practising textile artist who loves exploring colour and texture. From her 20 years' experience of teaching the young and the young at heart, she is a passionate and stimulating teacher who creates a supportive and fun environment. She teaches across the East Midlands and runs a community craft group.

www.joleatherland.com



Jon Legge is a

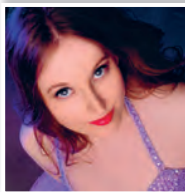
Nottingham-based photographer and teacher of photography with over 12 years' experience. He has a particular interest in the more unusual photographic techniques and obsolete processes, and enjoys sharing his knowledge.

www.jonleggephotography.blogspot.com



Hannah Myatt is an experienced Oriental belly dancer and has danced professionally for Chaines Dance Company since 2009. Under her performance name, Doe Demure, she also performs burlesque and hula hoop styles. Hannah hopes that her classes help students to feel confident and comfortable in their own skin.

www.doedemure.co.uk



Joy Norman is a mixed-media artist who has been working for many years with handmade paper pulp, textiles, organic items and found objects. She creates one-off pieces of framed work, wall hangings and decorative bowls, and has exhibited widely throughout the East Midlands. She is a member of the Design Factory and the Tesserae Textile Group.

www.joynorman.co.uk

Austin Orwin is a professional sculptor who exhibits his work regularly and also works to commission. He has been teaching at Embrace Arts for some seven years. His courses offer a very supportive environment where individual ideas can be explored and learners with a mix of experience can push the boundaries of their work.



Ketan Patel has established himself as a teacher and performer in Leicestershire since graduating from the Brighton Institute of Modern Music. A versatile musician, he is adept in classical, acoustic and electric guitar styles. He is a regular performer in a range of musical outfits including jazz, rock and classical ensembles.



Lisa Pidgeon runs the successful Littlebird School of Stitchcraft in the Charnwood area of Leicestershire. With an extensive background in healthcare, she has a particular interest in the benefits of art and craft activities on wellbeing, and is currently researching this field. She runs a variety of workshops and taught group sessions in café and museum venues around Leicestershire, including knitting and crochet lessons in the historic Guildhall. www.littlebirdsos.co.uk



Mark Polishook is a composer, music technologist, and jazz pianist from the United States now residing in Leicester. A former director of the music composition and theory program at Central Washington University, he has also been a Senior Fulbright Lecturer at the Crakow Academy of Music in Poland, composed an electro-acoustic installation and

a chamber opera, and been a finalist in international jazz piano competitions. His Generative Piano Project premieres in the International Audio Art Festival in Crakow in 2013.



Ulla Rajala is a classical archaeologist with a special interest in Greek and Roman art but a wide knowledge of prehistoric and later art from Europe and beyond.



She did her first degree in her native Finland and has an MA from Bristol and a PhD from Cambridge. Active in research and teaching, her aim is to convey the latest interpretations without forgetting interesting stories.

Lindsey Warnes Carroll has been performing, telling stories, writing and running workshops for children and young people for over 12 years. Most recently, she has delivered creative writing and drama workshops and storytelling sessions in primary schools and Sure Start children's centres across Leicestershire. As well as writing and performing comedy, Lindsey is also a member of the Leicester-based comedy improvising group Unidentified Flying Improv.

Alex Williamson studied for a textiles degree at Loughborough University and an HNC in jewellery and 3D design at Leicester College. She has taught jewellery evening classes at Embrace Arts for the past three years, in addition to being an independent designer maker. She is currently studying for a PGCE. www.alexwilliamson.com



Jenny Wright is a professional artist and exhibits as Jenny Grevatte. She has had many solo shows nationally and internationally, including a simultaneous exhibition at New

Walk Museum & Art Gallery and Embrace Arts in 2010. She has work in many public collections and has taught at Embrace Arts for 28 years.

www.jennygrevatte.co.uk



Andrew Wynne is a freelance visual artist, designing and creating contemporary wall-hung work to commission and for exhibition. His practice includes teaching in adult education, school residencies with learners ranging from reception year through to sixth form, community settings with art and



craft groups, day centres for people with learning disabilities and elderly people's homes. He likes to work by freely experimenting with the medium, working mostly with resist and discharge-dyed textiles, print and mosaic. www.andrewwynne.co.uk

Linda Young works as a freelance photographer and artist. After completing a Masters in photography in 2005, she was supported by Arts Council England to work on several projects and has exhibited nationally, as well as putting together publications and websites. Linda also teaches in schools and colleges and leads workshops for children and adults. www.itchytravel.com



Support the £1.5 Million New Galleries Appeal

Please help us extend our home at the Richard Attenborough centre to create a much-needed new wing for contemporary visual arts.

An innovative space accessible to all for sculpture, workshops and events.

Every £3 donated will attract a £2 match from Arts Council England

To support the appeal or for more information, contact **Ave Vinick** on **0116 252 2176** or arv4@le.ac.uk, or visit www.le.ac.uk/breakingbarriers.



“ I am extremely proud to support the New Galleries Appeal. Art is such a powerful tool that enables people of all abilities to express themselves in new and creative ways and this appeal will ensure that even more people are able to access the incredible resource that is Embrace Arts. **”**

Tanni Grey-Thompson DBE, Paralympian,
University of Leicester Honorary Degree recipient

Join Tanni by supporting the New Galleries Appeal today!

		Course planner Apr 2013 – Sept 2013	Tutor	Times
Visual art / Explore, create, connect	Tuesdays	Abstract watercolour	Lois Gardner Sabet	1.30pm – 4pm
		The abstract garden	Peter Clayton	1.30pm – 4.30pm
	Wednesdays	Painting problems	Jenny Wright	10am – 3pm
		A sense of place	Peter Clayton	1.30pm – 4.30pm
		Life drawing	Diane E Hall	6.30pm – 8.30pm
	Thursdays	Problem and criticism	Diane E Hall	11am – 12.30pm
		Pen and ink drawing	Stephen Coley	11am – 1pm
		Painting and drawing themes	Anna Revill	2pm – 4.30pm
	Fridays	Botanical drawing and painting	Georgia Danvers	10am – 1pm
		How to exhibit	Leila Houston	10am – 1pm
Sculpture and Pottery		Aspects of life drawing	Scott Bridgwood	2pm – 4.30pm
	Tuesdays	Adventures in art	Caroline Throp	10am – 12.30pm
	Mondays	Pottery for all	Bridget McVey	10am – 12pm
		Experiments in sculpture	Austin Orwin	6.30pm – 9pm
Art history	Thursdays	Experiments in sculpture	Austin Orwin	6.30pm – 9pm
	Tuesdays	Ancient wall paintings in context	Ulla Rajala	10.30am – 12pm
	Wednesdays	Exploring art	Miriam Gill	10.30am – 12pm
		Art examined	Miriam Gill	1pm – 3pm
	Thursdays	Eminent Victorians	Conny Bailey	1pm – 3pm
Dance	Fridays	Art across boundaries	Malika Kraamer	2pm – 4pm
	Mondays	Hula hoop dance for beginners	Hannah Myatt	6.30pm – 7.30pm
		Belly dance for beginners	Hannah Myatt	7.30pm – 8.30pm
		Open class burlesque	Hannah Myatt	8.30pm – 9.30pm
		Intermediate hula hoop	Hannah Myatt	6.30pm – 7.30pm
		Burlesque for beginners	Hannah Myatt	7.30pm – 8.30pm
	Tuesdays	Latin American dance: Beginners	Maggie Munoz	6pm – 7.30pm
Music / Photography		Latin American dance: Intermediate	Maggie Munoz	7.45pm – 9.15pm
	Mondays	Singing for fun	John Gull	1.30pm – 3.30pm
		Listening to jazz	Mark Polishook	6pm – 7.30pm
		Jazz performance	Richard Everitt	7.15pm – 9.15pm
	Wednesdays	Acoustic guitar for beginners	Ketan Patel	5.30pm – 6.30pm
		Classical guitar: Beginners	Ketan Patel	6.30pm – 7.30pm
		Classical guitar: Intermediate	Ketan Patel	7.30pm – 8.30pm
		Classical guitar: Experienced	Ketan Patel	8.30pm – 9.30pm
Jewellery making	Wednesdays	Ways of looking	Leila Houston	1pm – 4pm
	Mondays	Silver jewellery for improvers	Kate Bajic	2pm – 4.30pm
Words	Tuesdays	Create your own jewellery	Alex Williamson	6.30pm – 9pm
	Tuesdays	Reading and thinking	Richard Gill	7pm – 9pm
Family	Tuesdays	Tiny dancer	Alison Bacon	1pm – 2pm
	Wednesdays	Family sculpture	Penny Davis	6pm – 8.30pm

Dates	Page
30 April – 4 June	4
11 June – 9 July	4
29 May – 3 July	4
24 April – 22 May	5
15 May – 12 June	5
25 April – 4 July (fortnightly)	5
9 May – 11 July	5
25 April – 27 June	6
10 May – 12 July	6
17 May – 12 July	6
10 May – 12 July and 26 July – 27 Sept	7
23 April – 25 June	7
22 April – 8 July (not 6 or 27 May)	8
15 April – 1 July (not 6 or 27 May)	8
25 April – 4 July (not 30 May)	8
7 May – 9 July	9
24 April – 26 June	9
24 April – 22 May	9
6 June – 11 July	9
7 June – 12 July	9
8 April – 20 May (not 6 May)	10
8 April – 20 May (not 6 May)	10
8 April – 8 July (not 6 or 27 May)	10
3 June – 8 July	11
3 June – 8 July	11
23 April – 25 June	11
23 April – 25 June	11
15 April – 8 July (not 6 or 27 May)	12
2 – 30 Sept	12
22 April – 8 July (not 6 or 27 May)	12
1 May – 10 July (not 29 May)	12
1 May – 10 July (not 29 May)	13
1 May – 10 July (not 29 May)	13
1 May – 10 July (not 29 May)	13
8 May – 26 June (not 29 May)	13
15 April – 17 June (not 6 or 27 May)	14
7 May – 9 July	14
23 April – 2 July (not 28 May)	14
4 June – 9 July	16
19 June – 10 July	15



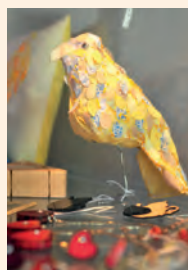
Exclusive to Embrace Arts learners

Book for any course or workshop and see great theatre, classical music, comedy, jazz, live art, spoken word, children's theatre and more – for just £5. Just ask for your fiVer card at the front desk (terms and conditions apply).

Crafts on sale

Beautiful and unique works by some of the region's finest makers are now available in our newly-extended shop in the foyer.

Original prints, cards, jewellery, ceramics, silk scarves, textiles and cushions to suit all budgets from less than £10 to £100.



The Arts Council England interest-free loan scheme, the easy and affordable way to buy and collect contemporary art and craft on sale in exhibitions at Embrace Arts.

Typical 0% APR

Subject to status. Terms and conditions apply. Applicants must be at least 18 years old. Embrace Arts is a licensed broker of Own Art loans. Registered address: Embrace Arts, University of Leicester, Richard Attenborough centre, PO Box 138, Lancaster Road, Leicester LE1 7HA.



Workshop diary Apr 2013 – Sept 2013

			Tutor	Dates	Times
Visual art	Saturday	Life drawing masterclass	Scott Bridgwood	20 April	10am – 3.30pm
		Tone and form	Diane E Hall	18 May	10am – 3.30pm
		Portraiture	Scott Bridgwood	6 July	10am – 3.30pm
		Botanical art and William Morris	Georgia Danvers	3 Aug	10am – 4pm
		Life drawing: For absolute beginners	Scott Bridgwood	7 Sept	10am – 3.30pm
	Mon – Weds	Drawing and painting in the Botanic Garden	Diane E Hall	19 – 21 Aug	10am – 3.30pm
Dance	Saturday	Cheerleading	Hannah Myatt	11 May	10am – 12pm
Jewellery making and crafts	Saturday	Working in silver: Bangles and bracelets	Kate Bajic	11 May	10am – 3.30pm
		The art of origami: Books	Phiona Richards	18 May	10am – 4pm
		Working in silver: Earrings and cufflinks	Kate Bajic	1 June	10am – 3.30pm
		Decorative papermaking	Joy Norman	15 June	10am – 4pm
		Creative felt making	Caroline Kisby	22 June	10am – 3pm
		Fun with block printing	Linda Harding	13 July	10am – 1pm
		The art of origami: Jewellery	Phiona Richards	27 July	10am – 4pm
		Batik – but not as we know it	Andrew Wynne	10 Aug	10am – 3.30pm
		Knitting from scratch	Julie Beardwell	7 Sept	10am – 3pm
		Working in silver: Rings	Kate Bajic	14 Sept	10am – 3.30pm
		Embroidered felt ball jewellery	Jo Leatherland	21 and 28 Sept	10am – 12.30pm
		Sat – Sun	Creative jewellery weekend	Betty Ching	31 Aug – 1 Sept
Photography	Saturday	Line, shape and repetition	Robert Hall	13 and 27 April	10am – 1pm
		Hue and colour saturation	Robert Hall	4 and 18 May	10am – 1pm
		Street photography	Robert Hall	8 and 22 June	10am – 1pm
		Pinhole photography	Jon Legge	20 July	10am – 4pm
		Capturing light	Linda Young	17 Aug	9am – 5pm
	Tues – Weds	Practical landscapes	Robert Hall	16 and 17 July	10am – 3.30pm
Family	Saturday	Family fun with stories	Lindsey Warnes Carroll	6 April; 25 May; 13 July	2pm – 3.30pm
		Adventures in Burgertown	Lisa Pidgeon and Lindsey Warnes Carroll	1 June	10am – 1pm
		Early years sculpture (0 – 2)	Penny Davis	15 and 22 June; 20 and 27 July; 24 and 31 Aug; 21 and 28 Sept	10am – 12pm
		Early years sculpture (3 – 7)	Penny Davis	15 and 22 June; 20 and 27 July; 24 and 31 Aug; 21 and 28 Sept	1pm – 3pm
	Wednesday	Family sculpture	Penny Davis	29 May	6pm – 8.30pm

Booking form

Please return to: Creative Learning Bookings, Embrace Arts, Richard Attenborough centre, PO Box 138, Lancaster Road, Leicester LE1 7HA.

First name Surname

Address

Postcode Date of birth

DAY/MONTH/YEAR							

Telephone (.....) Mobile

e-mail

Please book me on the following courses / workshops:

Code eg RZXXX	Title	Fee
---------------	-------	-----

.....
-------	-------	-------

.....
-------	-------	-------

.....
-------	-------	-------

.....
-------	-------	-------

.....
-------	-------	-------

Full fee ☐ Concession ☐ (please tick) **TOTAL**

I wish to pay by:

Cash ☐ Cheque (payable to **University of Leicester**) ☐ Credit/debit card

Card no.

--	--	--	--

--	--	--	--

--	--	--	--

--	--	--	--

MasterCard ☐ Visa ☐ Maestro/debit ☐ Switch ☐

Expiry date

--	--

--	--

Please note, your credit card details will be destroyed once your booking is complete

Please turn over...

If you are claiming a concession, please state benefit claimed (see 'How to book' for a list of allowable concessions):

Proof of benefit must be shown – photocopy enclosed ☐

Please give details of someone we can contact in case of emergency:

Name

Telephone Relationship

Do you have a disability, condition or allergy we should be aware of?

Yes ☐ No ☐

If 'yes' please give us details below or contact us to discuss specific requirements or in-class support:

Tick here if you would like blue badge car parking ☐

How did you hear about us?

OFFICE USE ONLY	Learner ID No.....
Receipt No.	Date paid.....
Receipt No.	Date paid.....
Receipt No.	Date paid.....

Applicants should note that the University reserves the right to make, without notice, changes in regulations, courses, workshops, fees, etc, at any time before or after a candidate's admission. Admission to the University is subject to the requirement that the candidate will comply with the University's registration procedure and will duly observe the Charter, Statutes, Ordinances and Regulations.

How to book

✉ **Post** your completed booking form (on pages 29 – 30 or download one at www.embracearts.co.uk) with a cheque made payable to **University of Leicester** to: Creative Learning Bookings, Embrace Arts, Richard Attenborough centre, PO Box 138, Leicester LE1 7HA.

📞 **Call us** on 0116 252 2455 and pay by debit / credit card.

👉 **Pop in to see us** and pay over the counter (Lancaster Road, LE1 7HA).

🕒 **Box office open** 9:15am – 6pm
Mondays – Fridays (closed Bank Holidays, 28 March and 2 April).

Please note the course / workshop fee must be paid in full at the time of booking. Basic materials are provided but there may be some additional costs on certain practical courses.

Booking policy

Bookings are dealt with on a first-come, first-served basis and only on receipt of the full fee. Some of our courses / workshops are extremely popular and sell out quickly, so you are advised to book early. If the course / workshop you want is fully subscribed, your name can be added to a waiting list for cancellations. All bookings sent in advance by post will be treated equally regardless of the date we receive them, and opened on the day when bookings open (**10am on Monday 18 February**) in no particular order of priority.

Age guidance

Generally our courses / workshops are most suited to those aged 16+ years, unless they are family events or otherwise stated. Younger people may be able to attend at the discretion of the tutor. Please contact us to discuss.

Cancellations

Occasionally some of our courses / workshops are cancelled due to low numbers. If this happens, you will be given a full refund. Wherever possible, we aim to let you know of a cancellation at least seven days before the course / workshop starts.

If you have to cancel your booking for a course / workshop, we will refund the fee, less a 15% administration charge, provided you give us at least seven days' notice by email or in writing. Details of our booking and cancellation policy are on our website at www.embracearts.co.uk.

Concessions

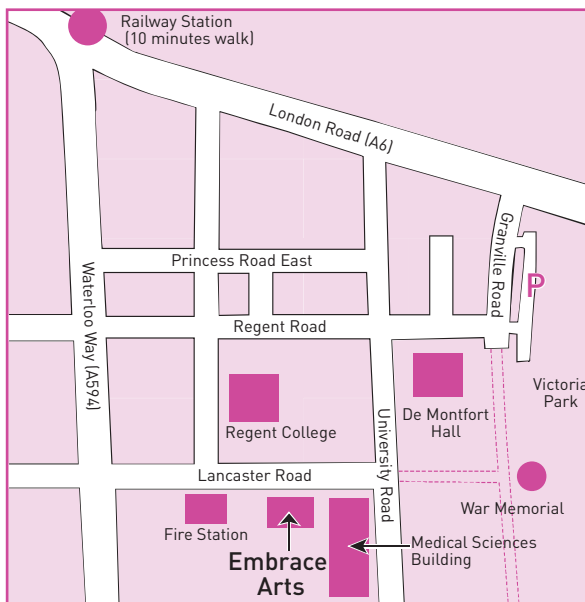
We offer concessions to:

- people on income-related benefits such as job seeker's allowance, disabled person's tax credit and pensions credit guarantee;
- those on non-income related benefits such as disability living allowance / personal independence payment, severe disability living allowance and incapacity benefit;
- unwaged dependents of those in receipt of certain concessions; and
- students in full-time education.

Full details are on our website at www.embracearts.co.uk. When booking, please let us know which concession you are claiming and provide proof of entitlement.

If you are an artist interested in becoming a freelance tutor at Embrace Arts, please contact arts-centre@le.ac.uk.

How to find us



Buses:

Numbers 47, 80 / 80a
(termtime only), 302.

Embrace Arts
Richard Attenborough centre
Lancaster Road
Leicester LE1 7HA

t: 0116 252 2455

e: arts-centre@le.ac.uk

www: www.embracearts.co.uk



Search for Embrace Arts




@EmbraceArts

RNID Typetalk service:

18001 0116 252 2455



Car parking: After 6pm and at weekends – **free** at the Medical Sciences Building next door. Weekdays – pay and display on Lancaster Road and in Victoria Park (De Montfort Hall, entrance on Granville Road).  Four spaces at Embrace Arts.

Cycle parking: at Embrace Arts and in front of the Medical Sciences Building.

If you need help in understanding this information, require a copy in Braille, larger print, on CD or audiotape, or would like a translator, please contact us. Access and inclusion are at the heart of our philosophy and we aim to provide a friendly, creative environment where disabled users can engage fully with all our activities. Embrace Arts is purpose built to enable access for everyone regardless of physical needs. While we are not able to provide all levels of support, we give free places to personal assistants of disabled learners attending courses and workshops.



Embrace Arts is the University
of Leicester's arts centre and
part of the Institute of
Lifelong Learning.

© University of Leicester ·
February 2013



Supported using public funding by
**ARTS COUNCIL
ENGLAND**

